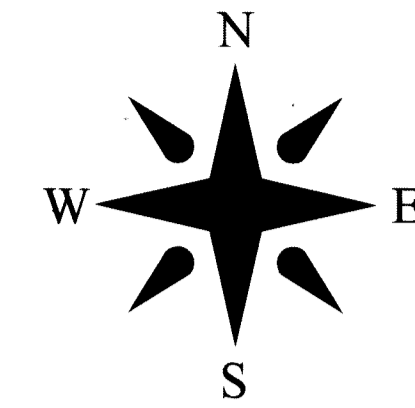


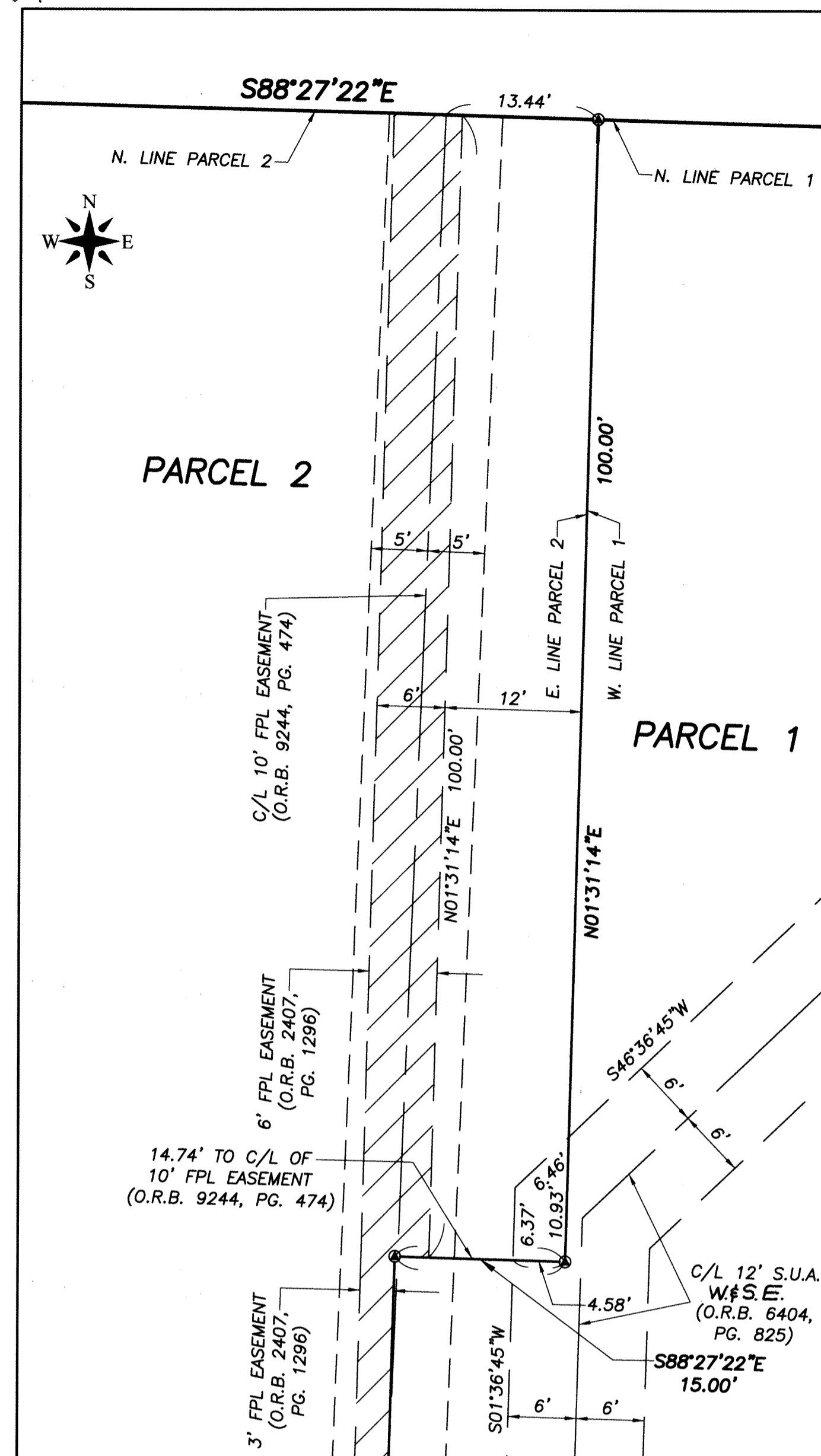
5519-001

NAPLETON KIA

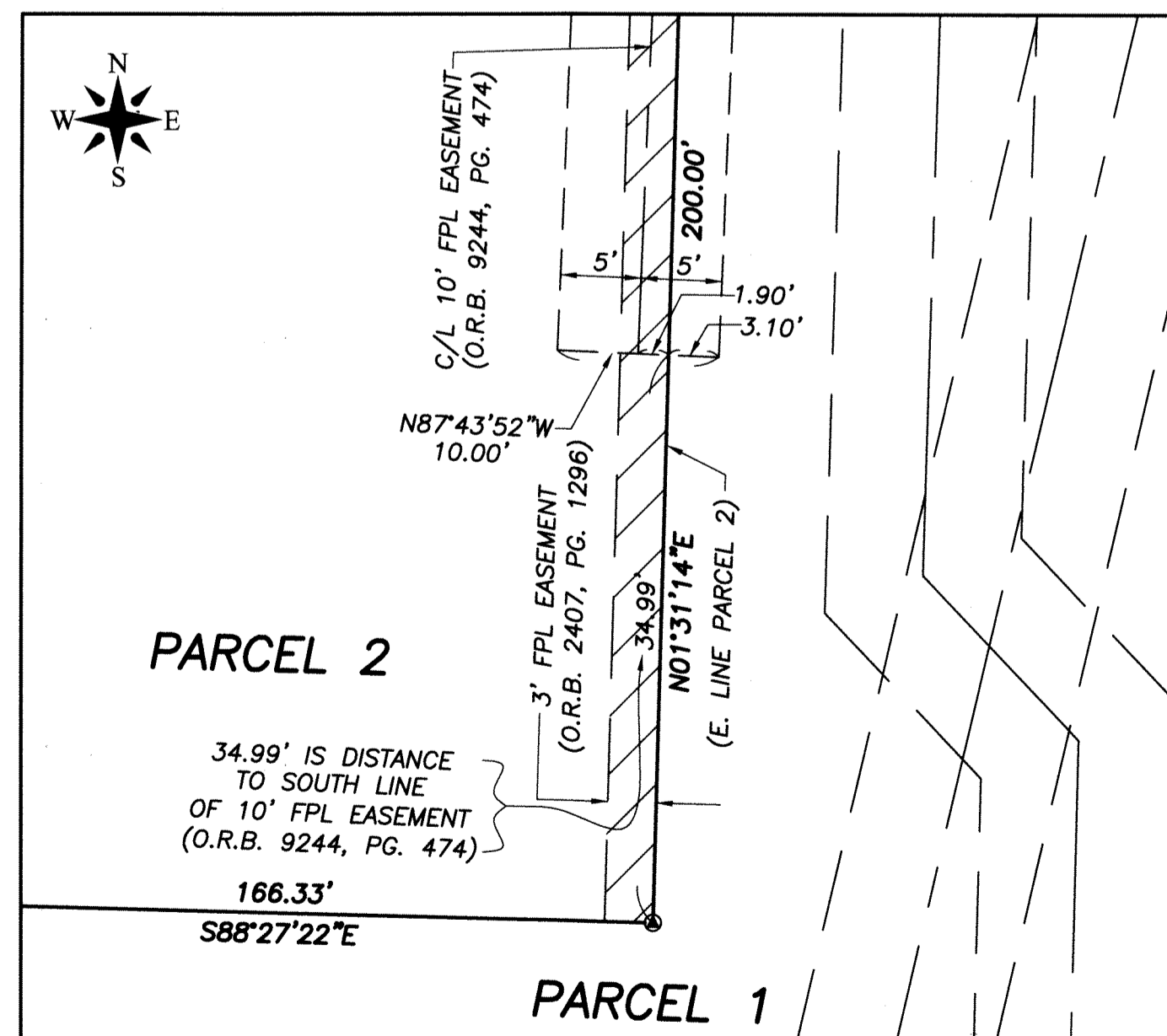
Lying in Section 19, Township 42 South, Range 43 East, Palm Beach County, Florida.



22

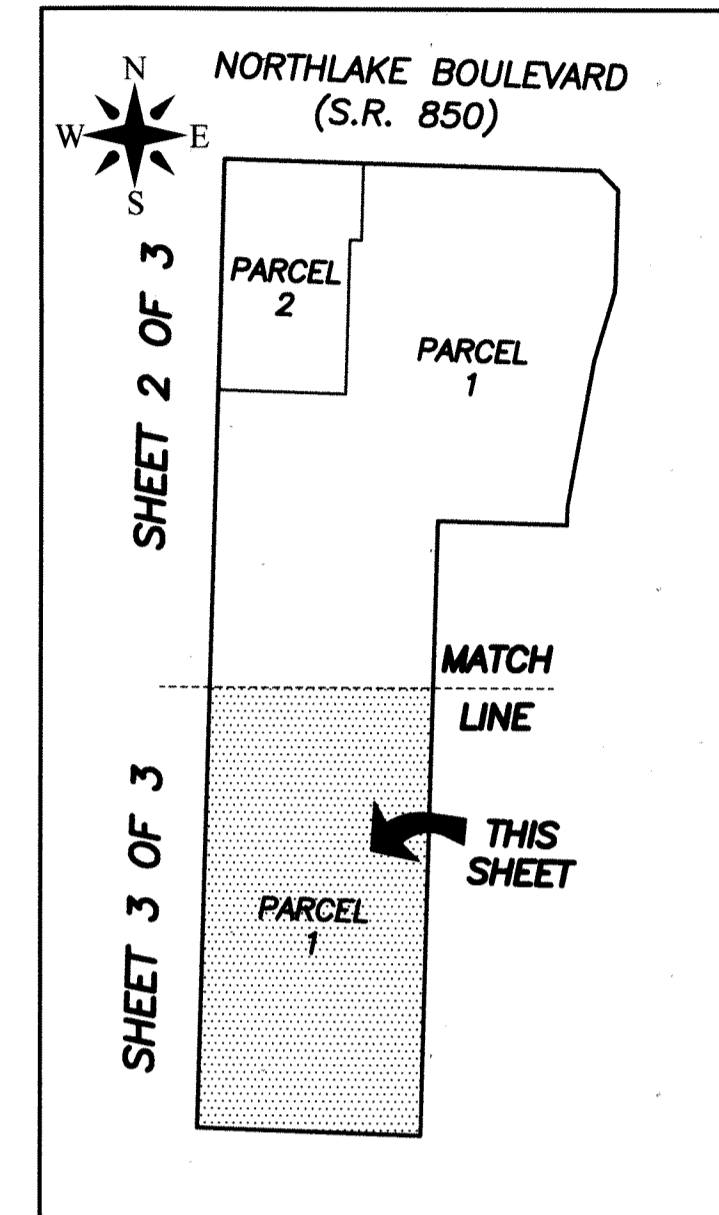


DETAIL "A"
(1" = 10')



DETAIL "B"
(1" = 10')

(SEE SHEET 2 OF 3)
MATCH LINE



SHEET INDEX

(SCALE: 1"=250')

ABBREVIATIONS/LEGEND

- (C) = CALCULATED
 - C, C/L = CENTERLINE
 - D.E. = DRAINAGE EASEMENT
 - F.K.A. = FORMERLY KNOWN AS
 - FPL = ACRONYM FOR "FLORIDA POWER & LIGHT"
 - L.A.E. = LIMITED ACCESS EASEMENT
 - LB = LICENSED BUSINESS
 - LS = LICENSED SURVEYOR
 - L.W.D.D. = LAKE WORTH DRAINAGE DISTRICT
 - N = NORTHING (WHEN USED WITH COORDINATE)
 - E = EASTING (WHEN USED WITH COORDINATE)
 - NAD = NORTH AMERICAN DATUM
 - N.T.S. = NOT TO SCALE
 - O.R.B. = OFFICIAL RECORDS BOOK
 - (P) = PLAT
 - P.B. = PLAT BOOK
 - P.B.C. = PALM BEACH COUNTY
 - PG. = PAGE
 - P.O.B. = POINT OF BEGINNING
 - P.O.C. = POINT OF COMMENCEMENT
 - P.R.M. = PERMANENT REFERENCE MONUMENT
 - R.P.B. = ROAD PLAT BOOK
 - R/W = RIGHT-OF-WAY
 - U.E. = UTILITY EASEMENT
 - S.R. = STATE ROAD
 - S.U.A.W.&S.E. = SEACOAST UTILITY AUTHORITY WATER & SEWER EASEMENT
 - = SET 4"x4" CONCRETE MONUMENT WITH DISK STAMPED "P.R.M. LB #4569"
 - = FOUND CONCRETE MONUMENT (AS NOTED)
 - = SET 5/8" IRON ROD & CAP STAMPED "WALLACE LB #4569"
 - = SET MAG NAIL & DISK STAMPED "WALLACE LB #4569"
 - ⊙ = SET MAG NAIL & DISK STAMPED "P.R.M. LB #4569"
- 19/42/43 = SECTION 19, TOWNSHIP 42 SOUTH, RANGE 43 EAST

NOT PLATTED

NOT PLATTED

NOT PLATTED

WEST LINE, EAST HALF, WEST HALF, NE QUARTER, NW QUARTER SECTION 19/42/43 AS DESCRIBED IN QUIT-CLAIM DEED O.R.B. 6404, PG. 952 & WARRANTY DEED O.R.B. 11454, PG. 220

958.00' (W. LINE PARCEL 1)

N01°32'46"E 1258.00'

(SENIOR DEED) QUIT-CLAIM DEED & WARRANTY DEED (O.R.B. 6404, PG. 952) (O.R.B. 11454, PG. 220)

EAST LINE, WEST 125' EAST HALF, EAST HALF, WEST HALF, NE QUARTER, NW QUARTER SECTION 19/42/43 "AS PRESENTLY OCCUPIED" PER QUIT-CLAIM DEED O.R.B. 6404, PG. 952 & WARRANTY DEED O.R.B. 11454, PG. 220

C/L 12' S.U.A.W.&S.E. (O.R.B. 6404, PG. 825)

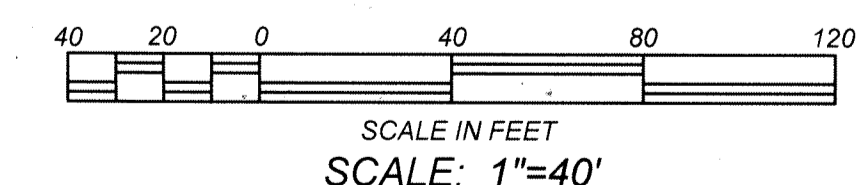
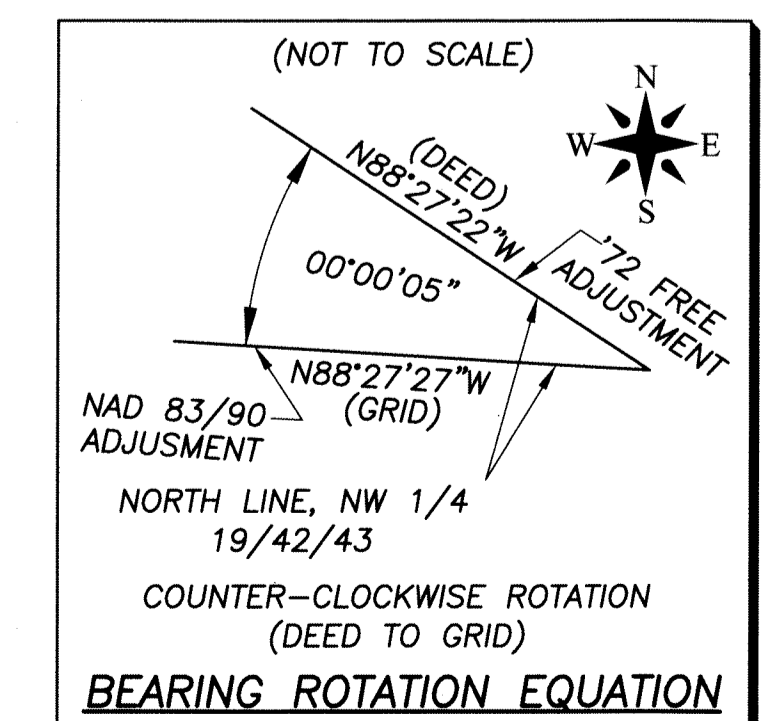
SOUTH LINE, NE 1/4, NW 1/4, SECTION 19/42/43

N:899324.321
E:951928.239

36
12' U.E. AND D.E. (P.B. 37, PG. 41)

12' UTILITY EASEMENT (P.B. 37, PG. 41)

PARKWAY VILLAGE (P.B. 37, PG. 41)



WALLACE SURVEYING CORP. LICENSED BUSINESS # 4569 5553 VILLAGE BOULEVARD, WEST PALM BEACH, FLORIDA 33407 (561) 640-4551		
FIELD:	JOB No.: 88-1538.8	F.B. PG.
OFFICE: R.C.	DATE: FEBRUARY 2017	DWG No.: 88-1538-2
C'KD:	REF.: 88-1538-2.DWG	SHEET 3 OF 3